

The logo for 'DONE' is located in the top left corner. It consists of the word 'DONE' in a bold, teal, sans-serif font. The letter 'D' is stylized with a white circular element on its left side. The logo is enclosed in a thin teal rounded rectangular border.

# OFF-LINE PROGRAMMER

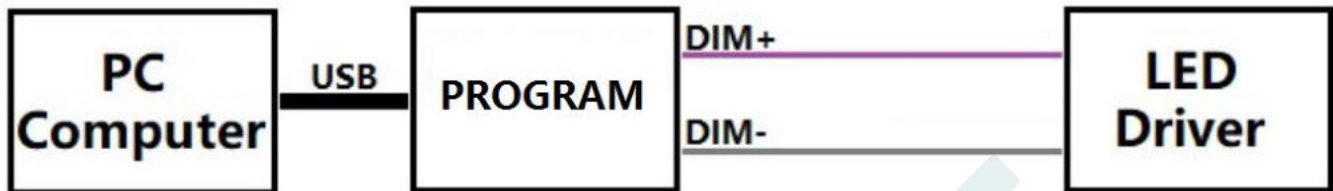
---

DL-BUN-PRG SPEC V1.0

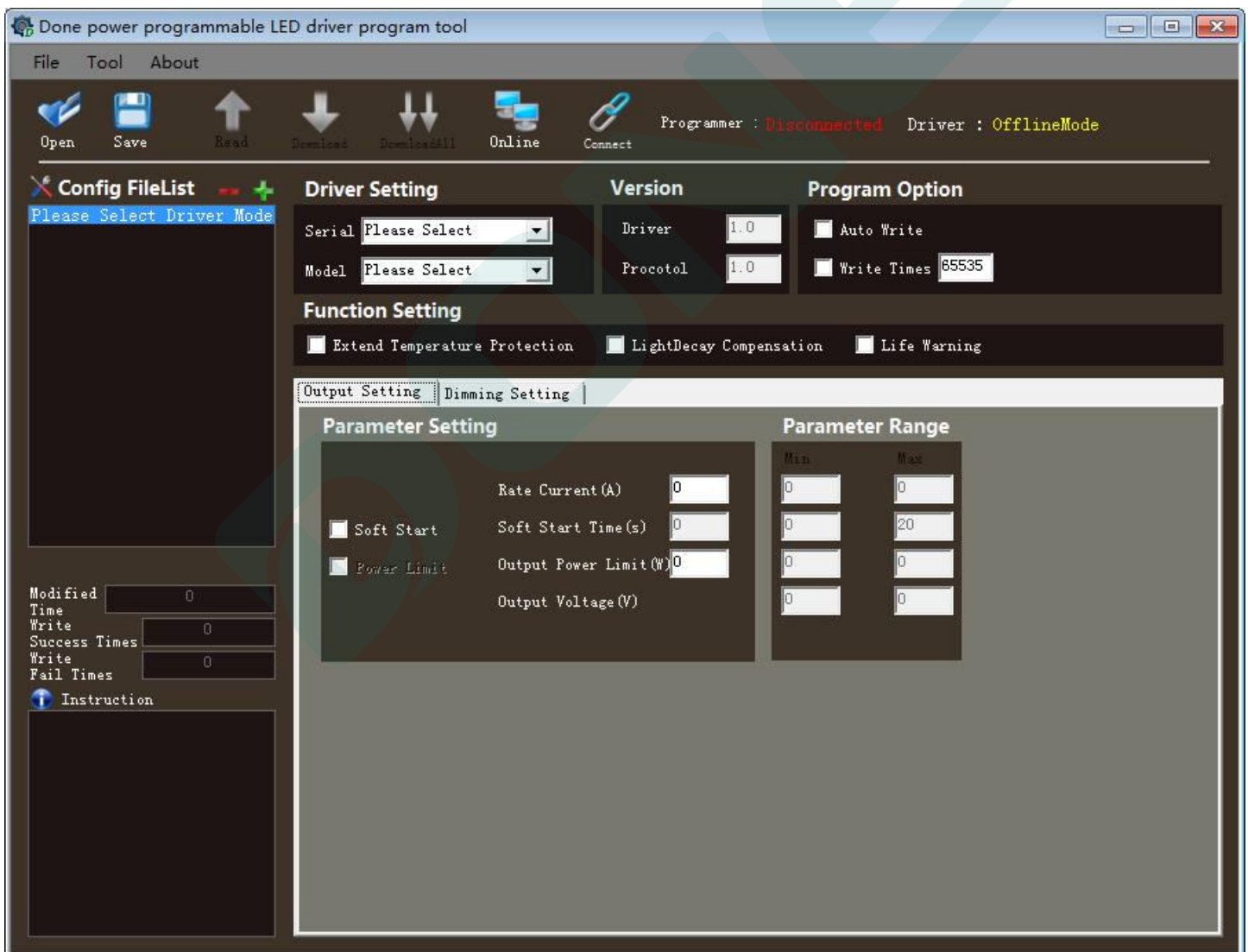
Factory default parameters: turn off over-temperature protection; turn off VCC power limit; turn off VCO power limit; turn off dimming shutdown function; dimming minimum ratio 10%; turn off current linear compensation; CCO port signal is positive logic (high level corresponds to High Power); Battery capacity 600mAH, battery life rechargeable 1000 times

**1. Hardware connection and startup software**

- a) Connect the computer and the programmer with the Micro USB cable, install the CH340S driver. The red wire is connected to the purple wire, and the black wire is connected to the gray wire.

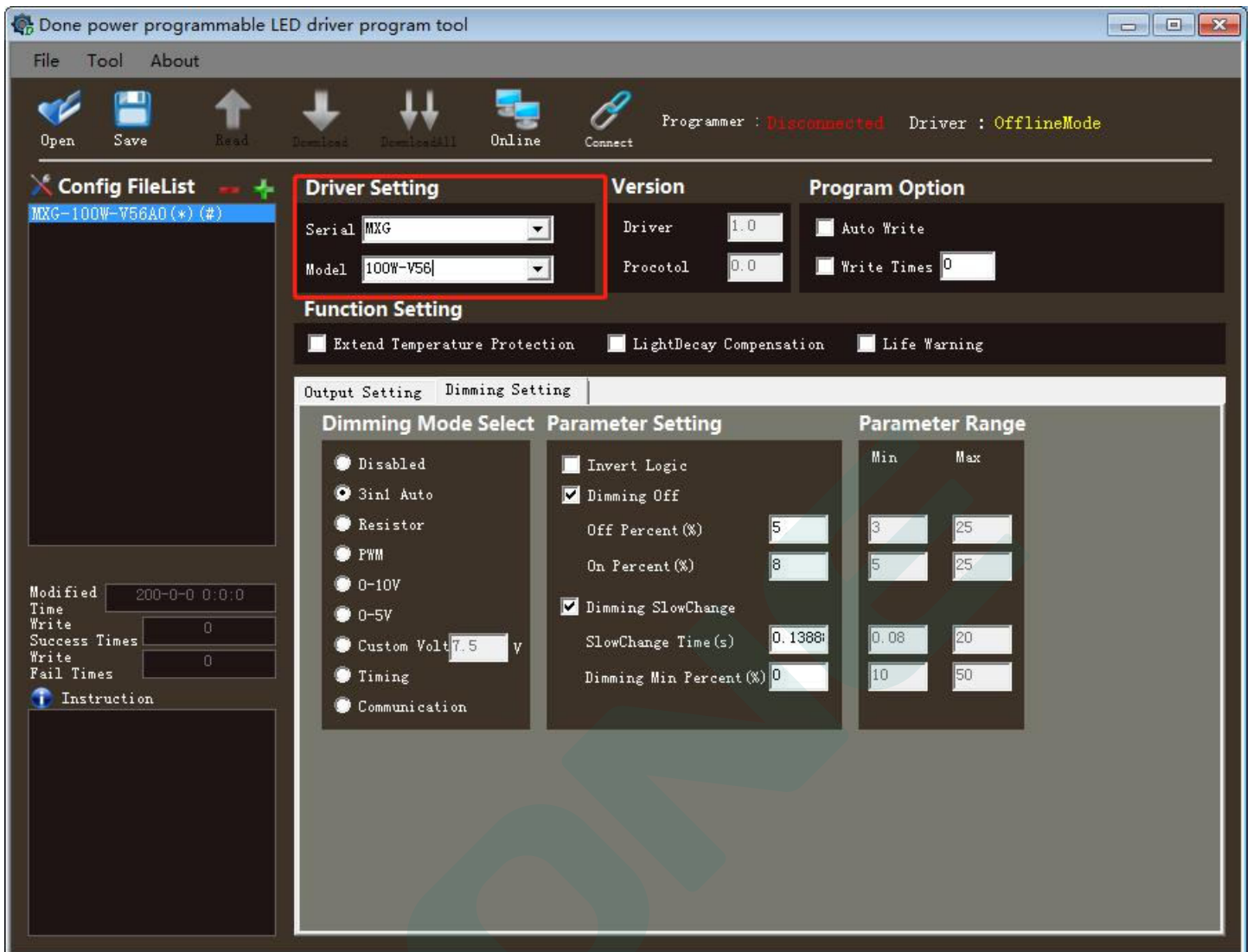


- b) Open the programming software and enter the programming tool screen.



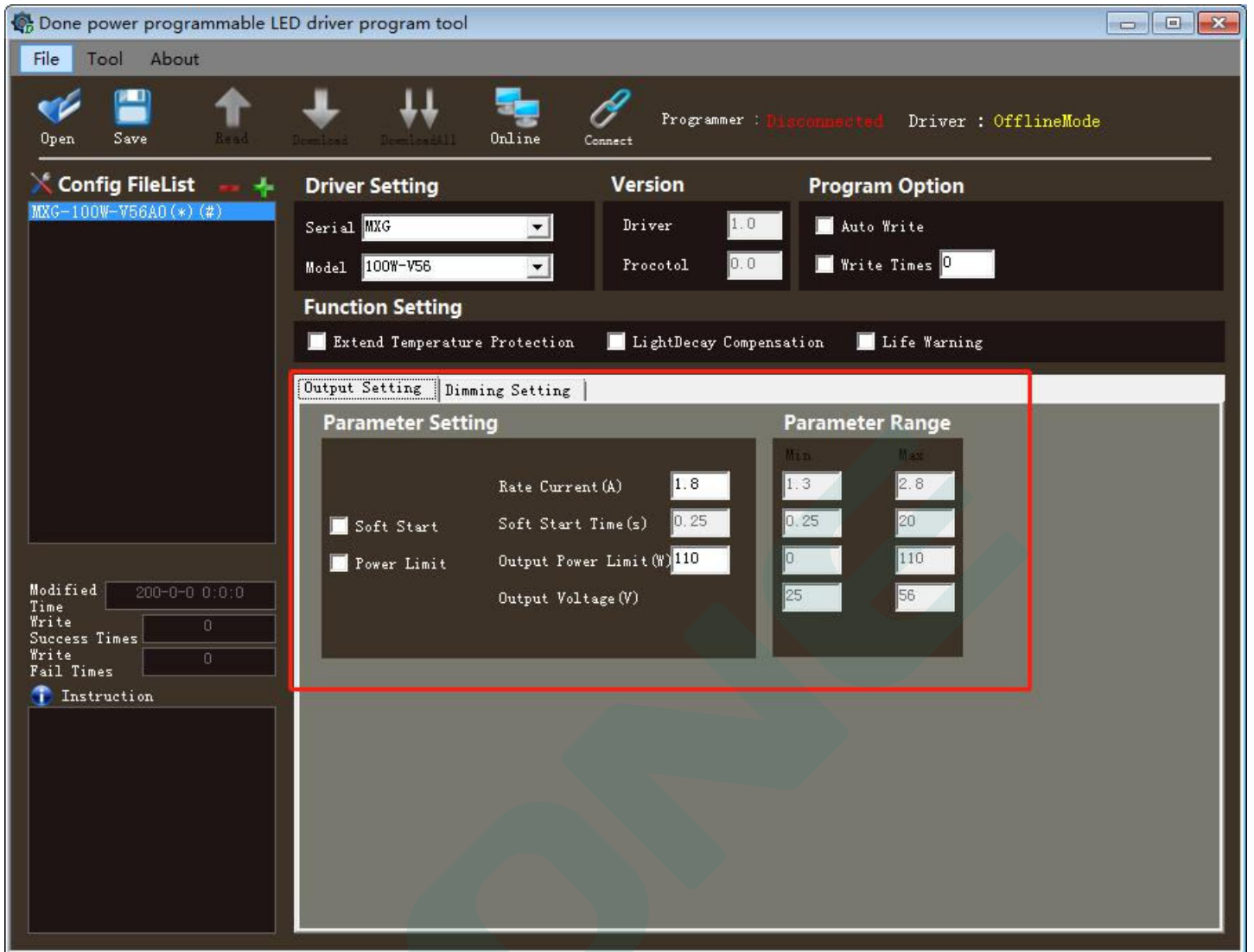
**2. Parameter setting**

- a) Driver Setting: set according to the actual situation on "series" and "model".

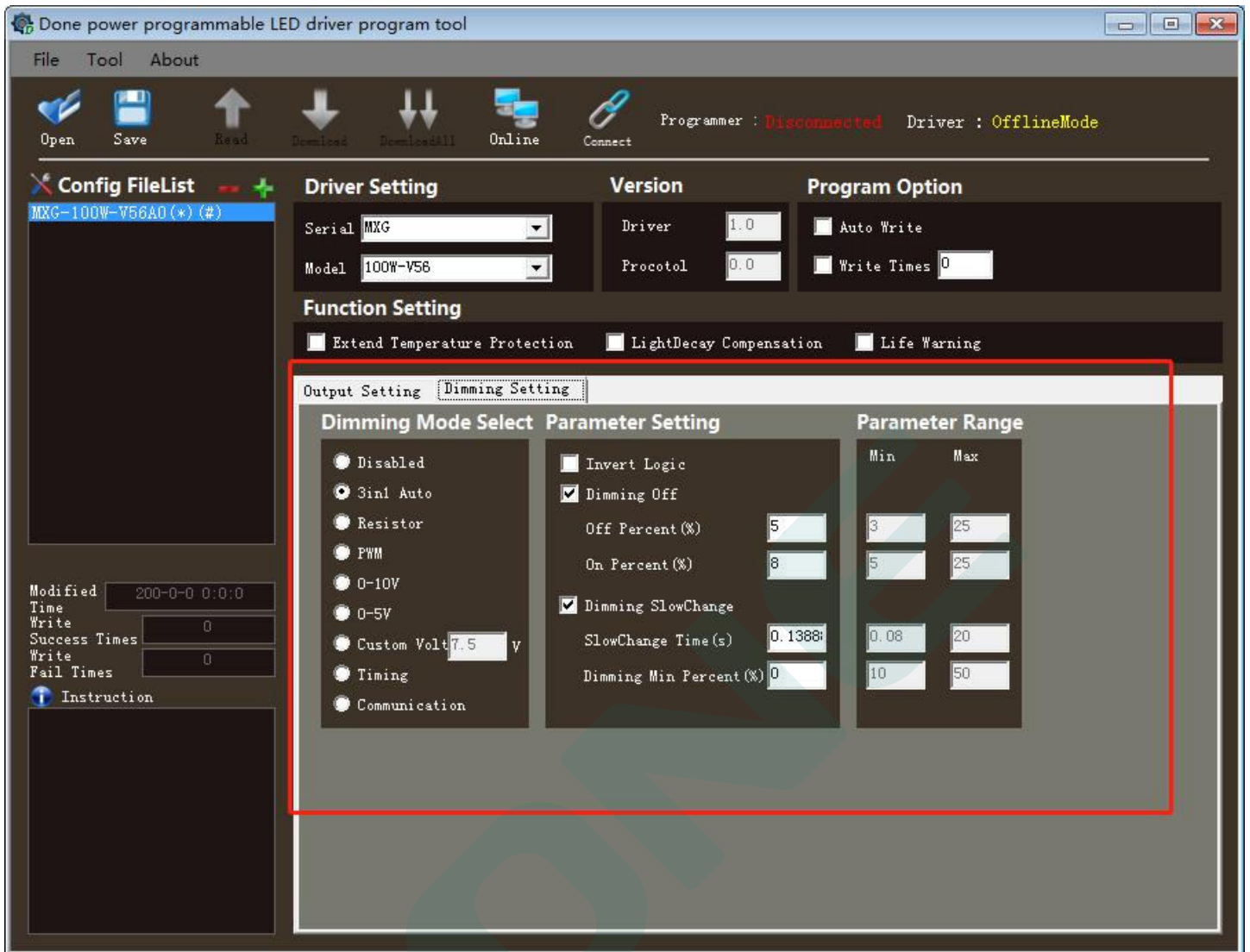


b) Output Settime

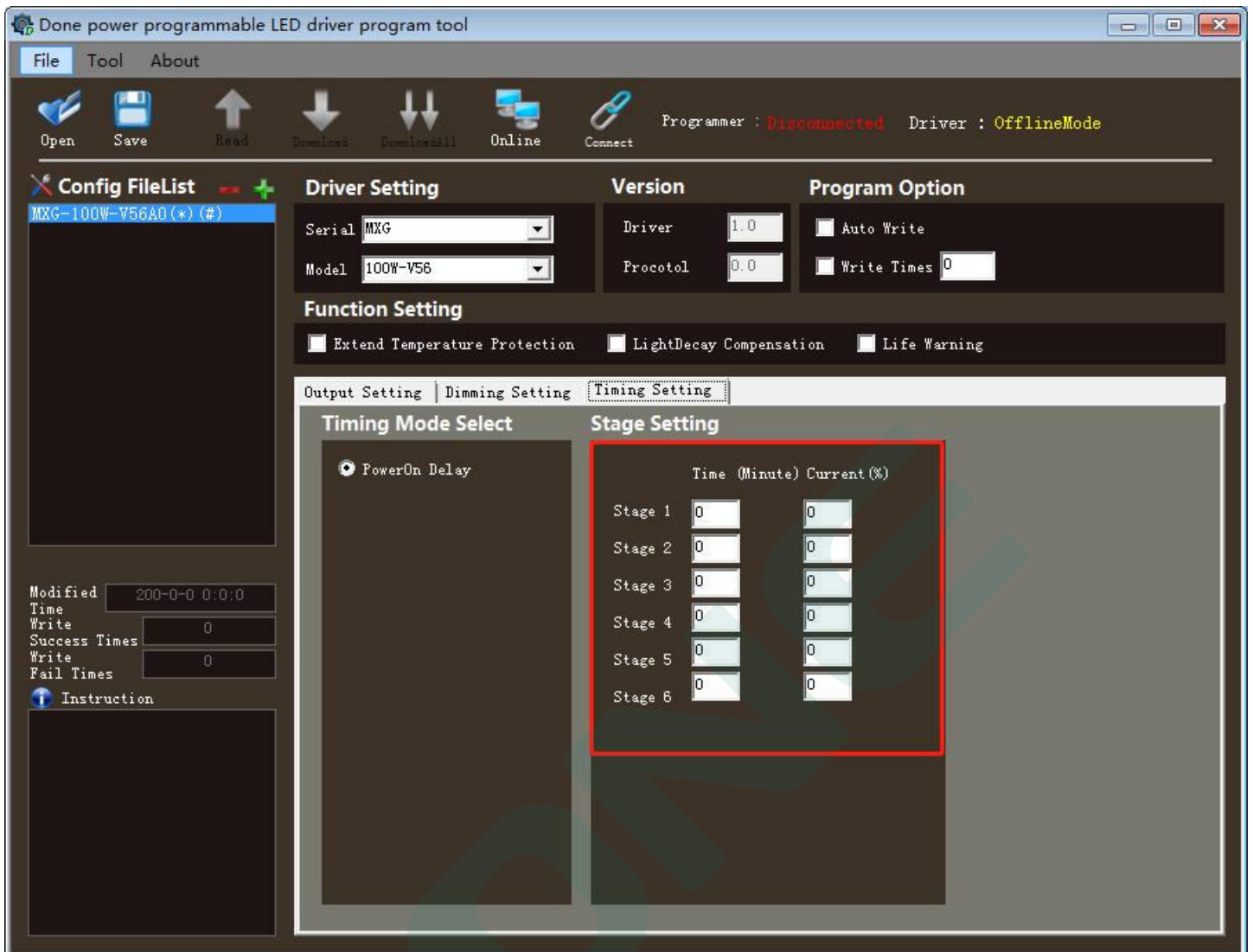
- i. Soft Start:When starting, the current rises slowly from small to large.
- ii. Power Limit:Limit the maximum output power of the drive.
- iii. Rate Current (A): The maximum current output by default, unit: A
- iv. Soft Start Time (s): The time elapsed from starting to the current reaching the set value, unit: second
- v. Output Fower Limit (W): Maximum output power, unit: watt



c) Dimming Setting



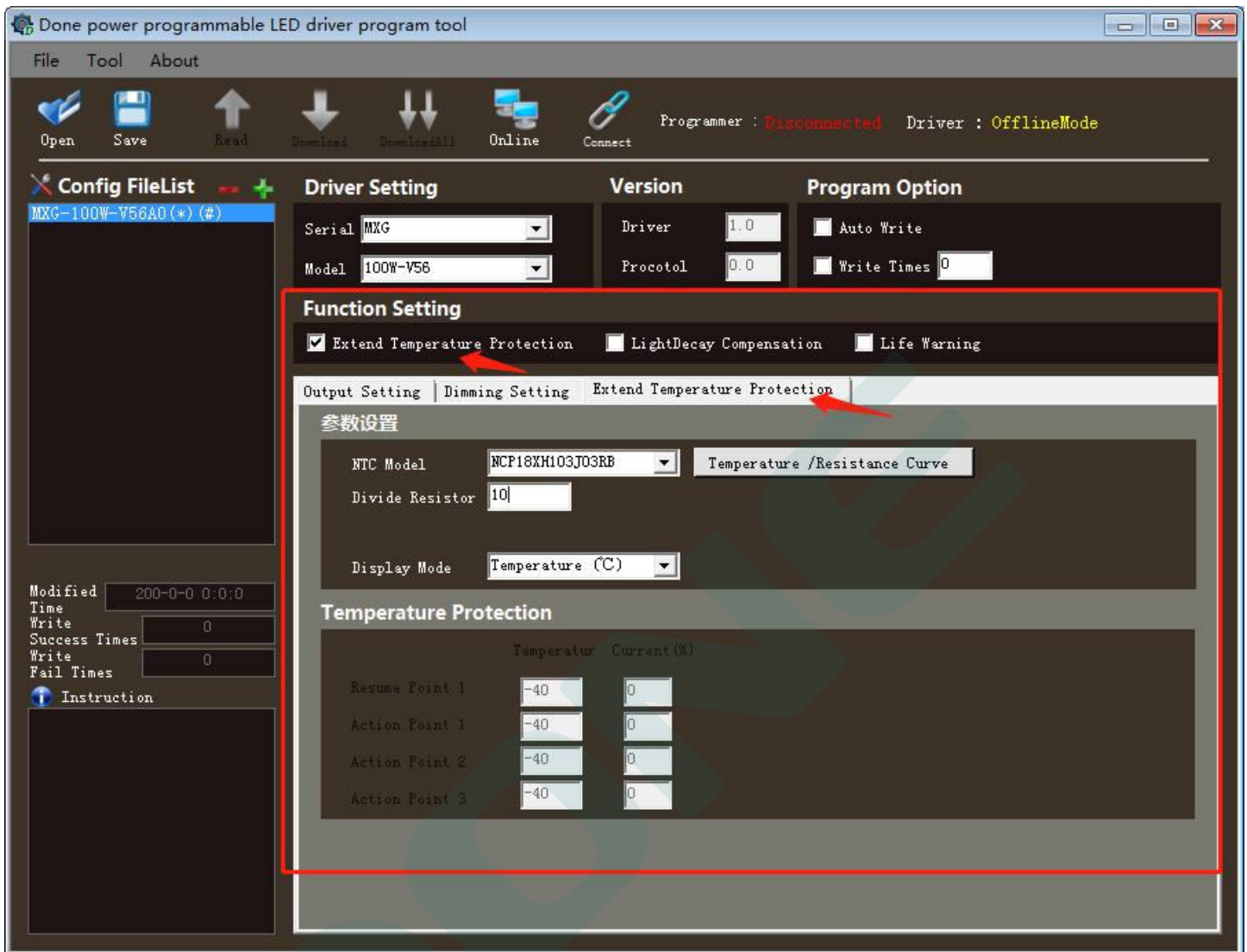
- i. Dimming Mode Select
1. Disable: No current output
  2. 3in1 Auto: PWM/voltage/resistance, automatic identification.
  3. Resistor: 0~100K resistance input. Use the resistance value to adjust the current output value.
  4. PWM: Supports 300~3K frequency input, and adjusts the output value of the current through the duty cycle.
  5. 0~10V: The input voltage of 0 to 10V is used to adjust the output value of the current.
  6. 0~5V: The input voltage is 0 to 5V to adjust the output value of the current.
  7. Custom Volt: Input voltage from 0 to a custom voltage value to adjust the output value of the current.
  8. Timing: After enabling, a new setting page will be added, the current ratio corresponding to the 6 time periods.
  9. Communication: Use dali2 controller to control output current.



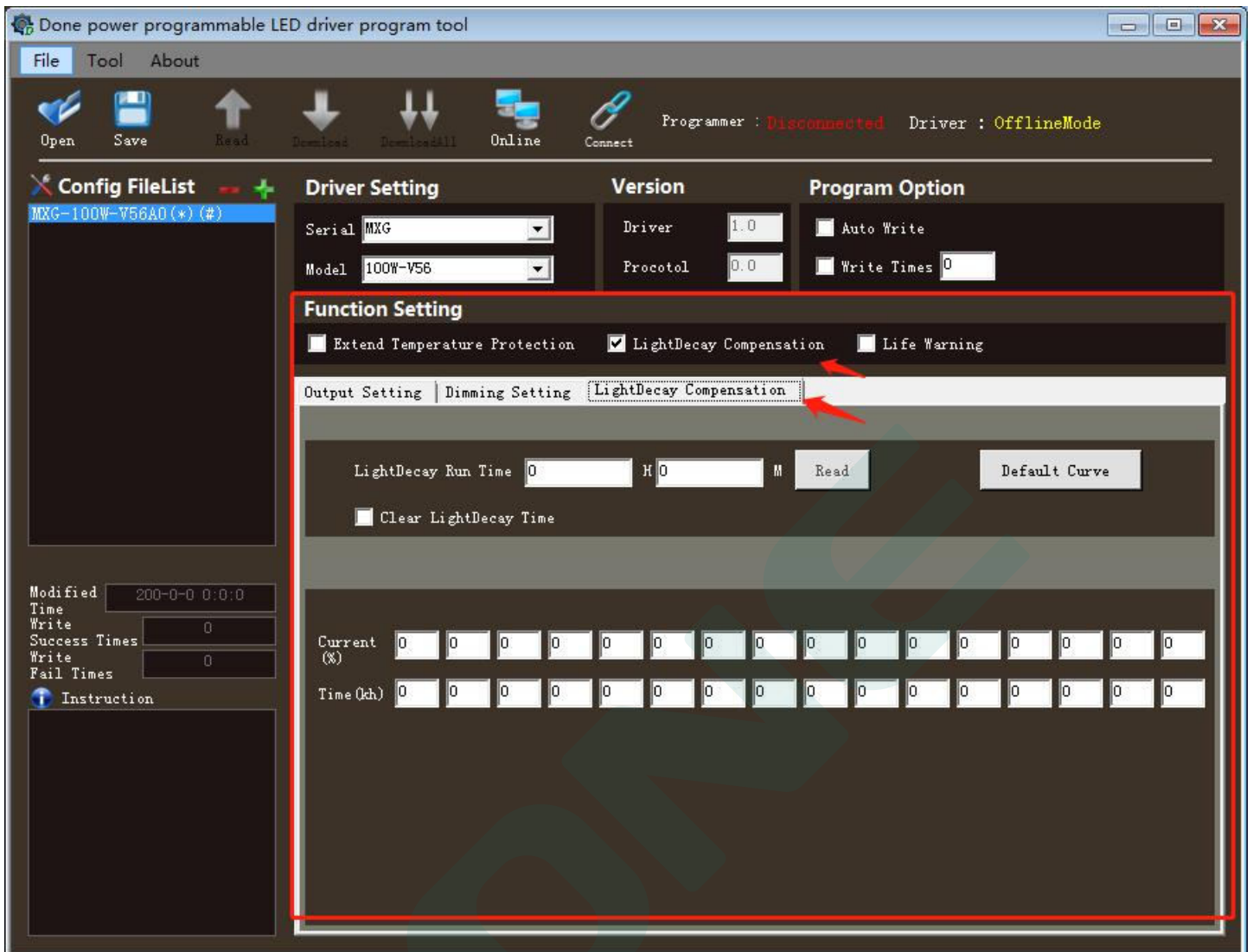
ii. Parameter Setting

1. Inverse logic: It is positive logic when voltage, resistance, and PWM are used to adjust the current. The larger the value of the input signal, the larger the output current. After the inverse logic is enabled, the opposite is true. The larger the value of the input signal, the smaller the output current.
2. Dimming Off
  - a) Off Percent (%):When the input current ratio is less than this value, the output is turned off.
  - b) On Percent (%):When the input current ratio is greater than this value, the output is turned on.
3. Dimming SlowChange
  - a) SlowChange Time (s): When the input value changes, the output current slowly reaches the predetermined value within this time period.
  - b) Dimming Min Percent (%):When the input current ratio is greater than this value, there will be current output.
- d) Extend Temperature Protection: After enabling, a new page appears. Select the NTC model according to the actual situation and set the voltage divider resistance value. The display mode generally selects "temperature". The temperature protection column has 4 levels. When the temperature reaches "action point 1", the current press The percentage output on the right is the same for

the other two “action points” ; when the temperature drops below the “recovery point”, the original current value is restored.

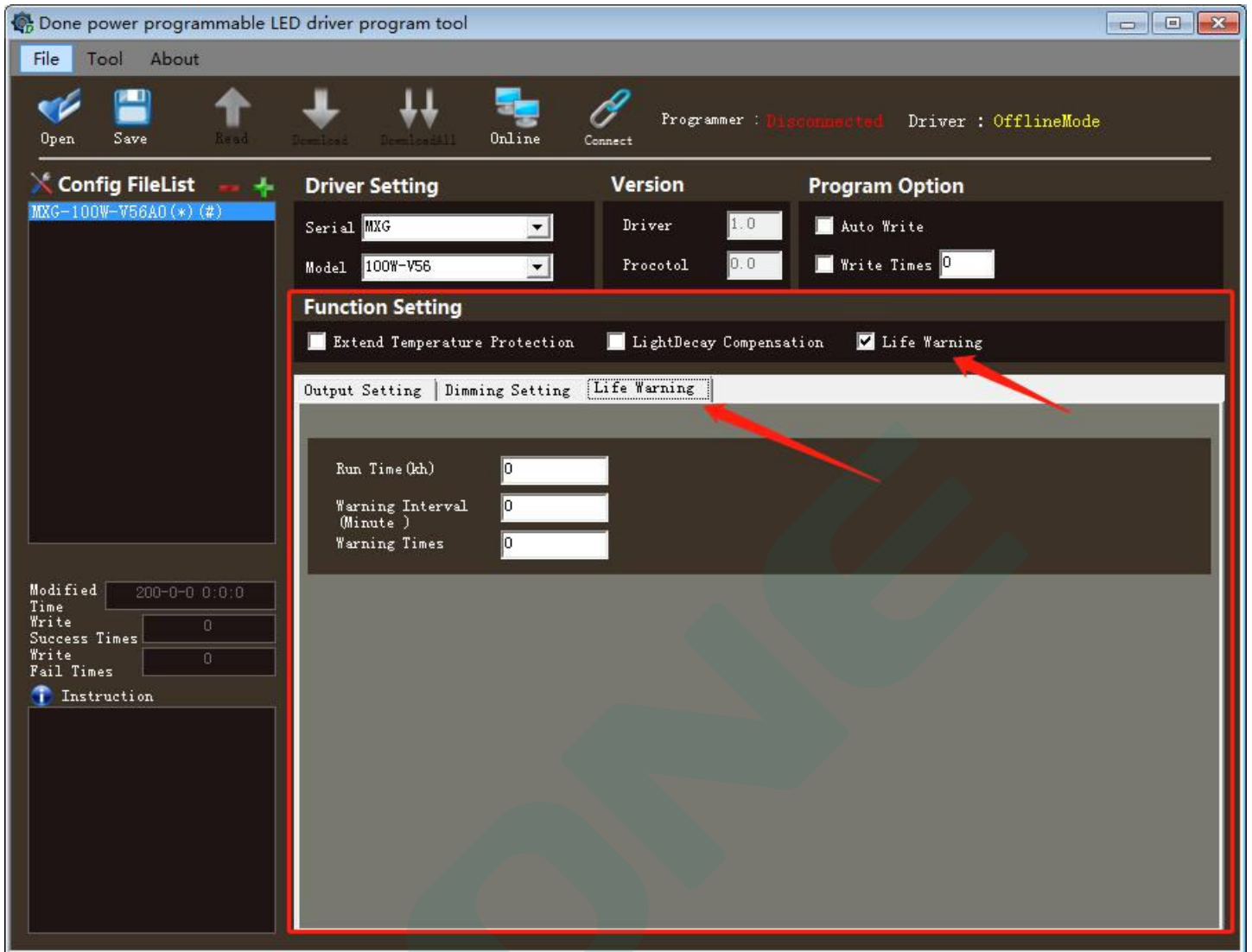


- e) LightDecay Compensation: After enabling, a new setting page is added. There are 16 gears below, which can set the specific time period and the corresponding maximum current ratio. The longer the time, the greater the current percentage. Example: If the current percentage is set to 80%, then the voltage input 0~10V corresponds to the output current 0~80%.



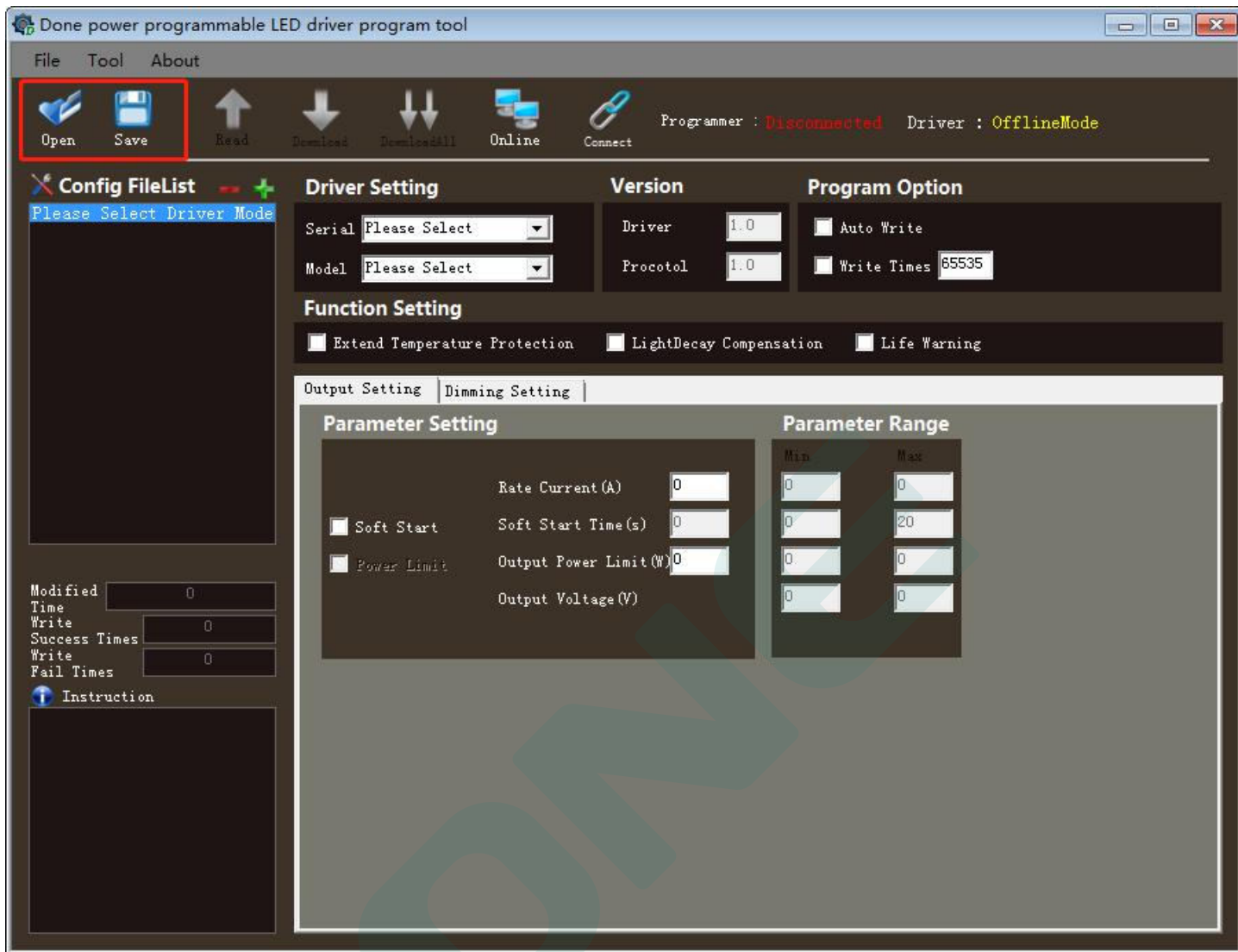
- f) Life Warning: When the accumulated working time of the drive reaches the "Run time", it will send out an early warning. During the early warning, it will be on for one second and off for 13 seconds. After reaching the "alarm interval", the warning will continue, and the warning will stop when the number of warnings is reached.





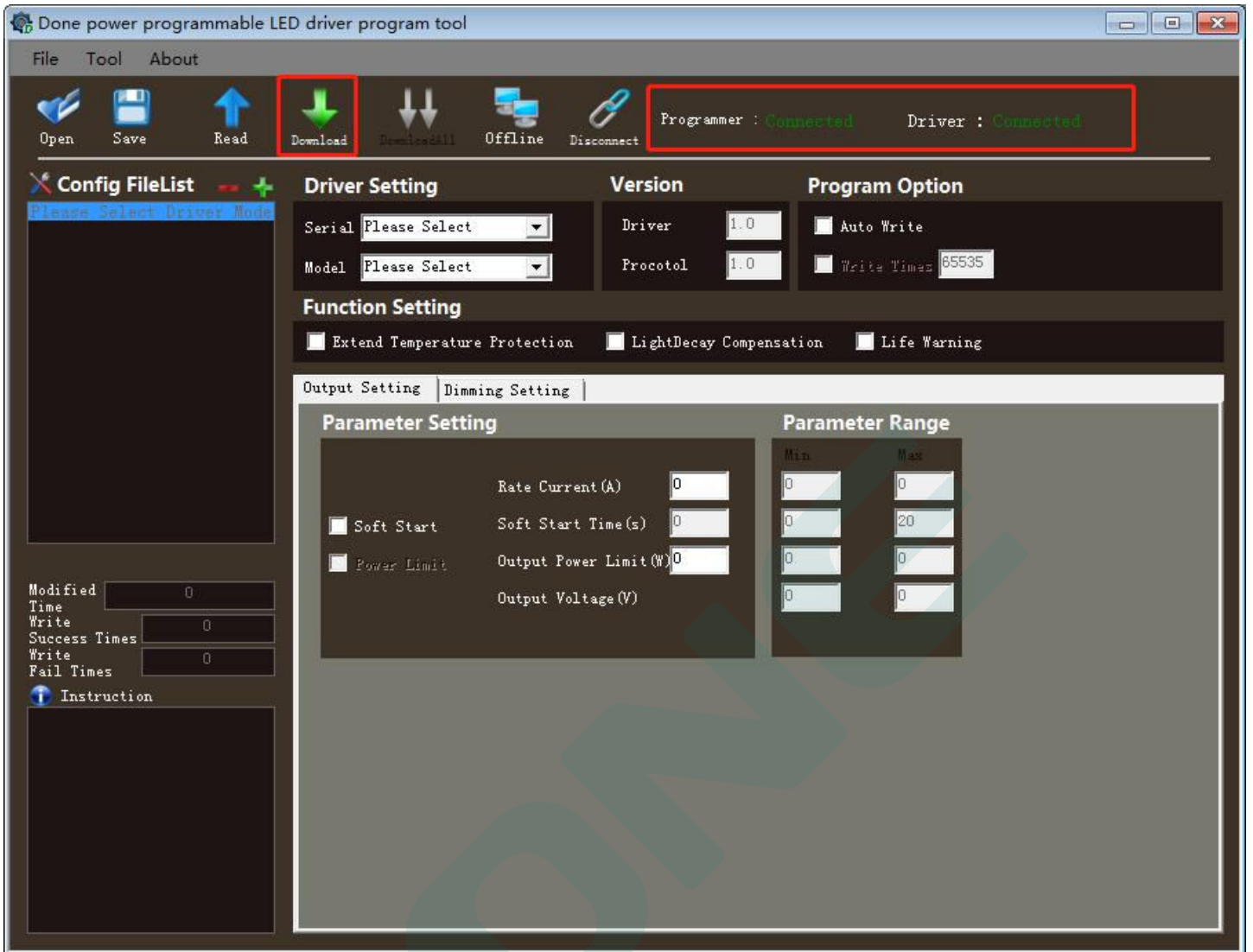
### 3. Configuration file saving and loading

After the parameters are set, they can be saved as a configuration file, and the saved file can be opened to load the parameters back next time when there is a need to modify them.



#### 4. Download parameters to the device

Click the "Connect" button to connect the computer to the programmer. Click the "Online" button to connect the programmer to the drive. Click the "download" button to download the parameters to the drive. If you select the "offline" mode, click the "download" button to download the parameters to the programmer. In the offline state, after the programmer is connected to the driver, press the button on the programmer to download the parameters to the driver.



2021.12.18

Guangdong DonePower Technology Co.,Ltd

**Version**

DATE	DESCRIPTION	REV.	CHECK
2022.3.31	Initial version.	V1.0	

**MANUFACTRUER**

EDIT	CHECK	APPROVE
 2022.03.31 16:23:30 +08'00'	 HJW 2022.03.31 16:32:49 +08'00'	